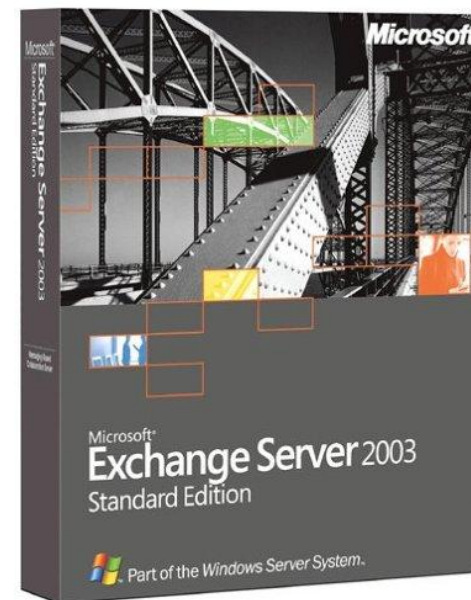
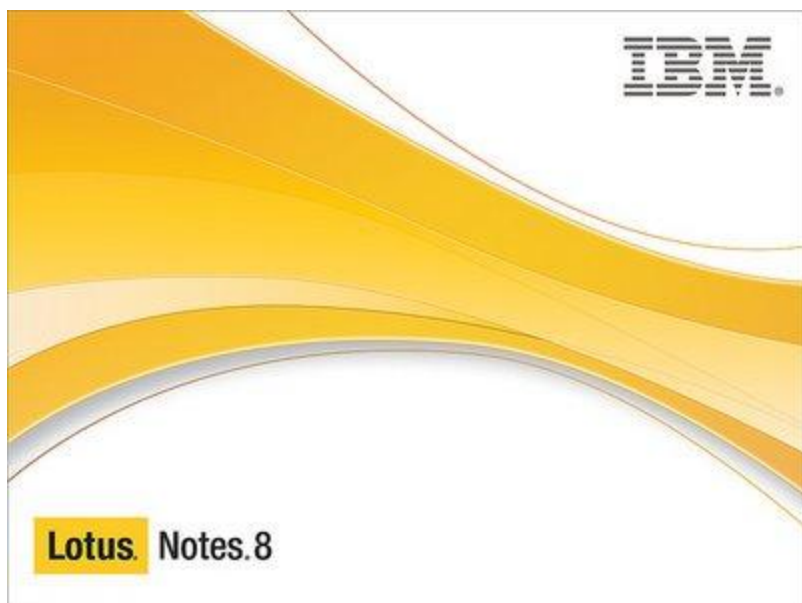




Lotus versus Exchange





IBM Lotus Notes/Domino vs. MS Exchange & Outlook

Installation and Deployment
Interoperability and Customization
Platform support
Clustering
Multi-server environment

Offline work
Development
Maintenance and upgrades
Pricing
Independent evaluations





Installation and Deployment



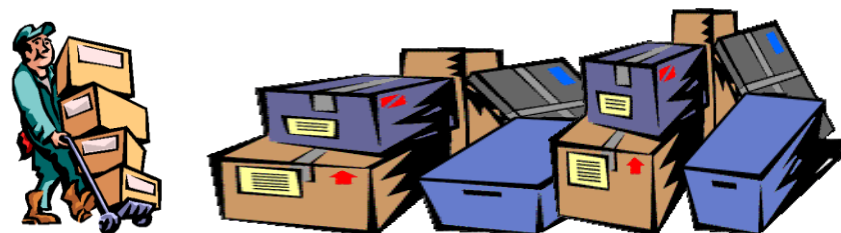
IBM Lotus Domino

- installer contains all of the necessary files
- choose tasks from choicelist interface
- setup and run Domino server in minutes



MS Exchange

- lengthy process, must pass 'Readiness check' (fails on DNS and AD issues)
- requires many extra components (.NET 3.5 Framework, Windows Remote Management 2.0, Power Shell v2, IIS components, ...)
- download each component and then reboot the server after each is installed





Interoperability and Customization



IBM Lotus Notes/Domino

- cross-platform, secure, distributed document-oriented database and messaging **framework**
- rapid application development **environment** that includes pre-built applications like email, calendar, document editors, teamrooms, libraries, workflows...
- ready for mash-ups and composite applications
- Expeditor toolkit for custom plug-ins



MS Exchange & MS Outlook

- MS Exchange is generally purpose-built **application** for mail and calendaring only that offer APIs for custom extensibility
- out-of-the-box solution with shrink-wrapped feature set



Platform support



IBM Lotus Notes/Domino 8.5 runs on:

- Microsoft Windows 2003 Server Standard Edition
- Microsoft Windows 2003 Server Enterprise Edition
- Microsoft Windows 2003 Server x64 Edition
- Microsoft Windows Server 2008 Standard Edition
- Microsoft Windows Server 2008 Enterprise Edition
- Microsoft Windows Server 2008 x64 Standard Edition
- Microsoft Windows Server 2008 x64 Enterprise Edition
- Novell SUSE Linux Enterprise Server (SLES) 10 x86 (32-bit)
- Novell SUSE Linux Enterprise Server (SLES) 10 x86_64 bit
- Red Hat Enterprise Linux (RHEL) 5.0 and 5.1 (32-bit)
- Red Hat Enterprise Linux (RHEL) 5.0 and 5.1 (64-bit)
- Sun Solaris 10 (64-bit kernel)
- IBM AIX 5.3 (64-bit kernel)
- IBM AIX 6.1 (64-bit kernel)

Source:

<http://www-01.ibm.com/support/docview.wss?rs=463&uid=swg27013072>



MS Exchange 2007 runs on:

- Microsoft Windows 2003 Server x64 Edition
- Microsoft Windows Server 2008 64-bit edition



Source:

<http://technet.microsoft.com/en-us/library/aa996719.aspx>

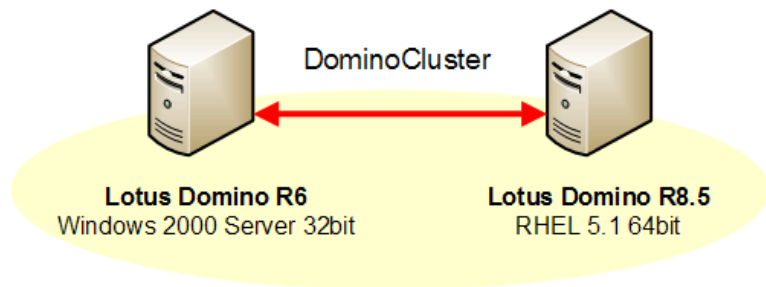


Clustering (fault toleraring systems)



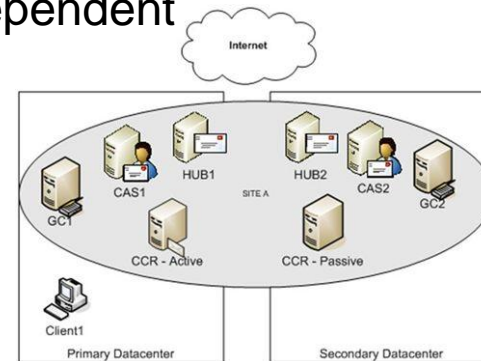
IBM Lotus Notes/Domino

- true „Hot Site“ active/active clustering
- cross network cluster for failover and load-balancing
- for fully redundant system you need two Domino servers, that can be clustered:
 - cross-version (R4 x R5 x R6 x R7 x R8)
 - cross-platform (Windows x Linux x AIX x Solaris)



MS Exchange

- OS level cluster = for fully redundant Exchange 2007 with CCR you need at least 6 servers
- only Windows Enterprise Server 2003 or 2008 64-bit supported
- Active Directory dependent



Source:
<http://technet.microsoft.com/en-us/library/aa996719.aspx>



Multi-server environment



IBM Lotus Notes/Domino

- **Replicas** - one mailbox database can be present on unlimited number of Domino servers
- Synchronization of replicas by **replication process** (native since R1 - 1983)
- Allows users to work on a course without tying up network
- Allows users to work independently outside a network connection.
- Updates to databases can be made easily and efficiently either from workstation to server or vice versa.
- Facilitates access to the latest information.



MS Exchange

- Exchange 2007 is first version to support replication
- consumes high bandwidth
- no selective replication on message level



Offline work



IBM Lotus Notes/Domino

- local replicas allows to store any application in locally encrypted databases
- users can work offline in Lotus Notes rich client (without connection to server)
- Access offline web applications using DOLS (Domino Offline Services)
- synchronization when reconnected
- selective replication (you replicate only what you need = lower bandwidth, higher security)



MS Exchange

- Outlook Cached Exchange Mode (only e-mails, calendar and contacts)



Maintenance and upgrades



IBM Lotus Notes/Domino

- Lower TCO than competitors in mid- and longterm perspective
- Lotus Domino server console – realtime activity logging and troubleshooting
- Simple UI administration
- Fast server upgrades (in-place upgrade to newer version in minutes)
- Easy data manipulation (database = 1 file)
- Single mailbox backup & recovery
- New releases according to IBM route plan
- Code compatibility R4 – R8.5



MS Exchange

- Dependent on Active Directory
- Event logs – report history, not realtime
- PowerShell – powerful, but hard to use
- Upgrades = big „migration“ projects (e.g. upgrade MS Exchange 2003 on Windows 2003 32bit to MS Exchange 2007 on Windows 2003 64bit)
- Recovery by entire First-Storage-Site file
- Between 2003-2007 no version – customers have paid for nothing
- Limited or no compatibility with previous releases



Development



IBM Lotus Notes/Domino

- 5-10x cheaper than MS Exchange
- format standards, common interfaces, open source code
- based on document databases (non-relational)
- many ready-to-use objects and native classes (UI & backend)
- brings freedom – you can use Outlook with Domino servers, mix R4-R8 clients on R4-R8 servers with only minor limitations, supports ODF in Lotus Symphony editors etc).



MS Exchange / MS Sharepoint

- proprietary formats, hidden code
- expensive Microsoft development tools
- limited features (no reader/author fields, no agents, max. 2000 items in view, private views only on server)
- compels customers to commit to a 100% Microsoft-based infrastructure
- migration to MS world is „irreversible“ step (extremely difficult to leave) – Microsoft „lock-in“ philosophy





Security



IBM Lotus Notes/Domino

- bomb-proof security against viruses and trojans is not matched in any other e-mail system
- access control levels: domain > server > folder > database > view > document > section > field
- ECL
- can be independent on OS authentication = extra security

- same security model from version 1.0



MS Exchange & MS Outlook

- „Microsoft syndrom“ - vulnerable to many attacks (HTML malcode, exploits, security holes)
- Melissa, ILoveYou etc. originated in Outlook environment
- any extra security level beyond OS authentication must be custom-coded



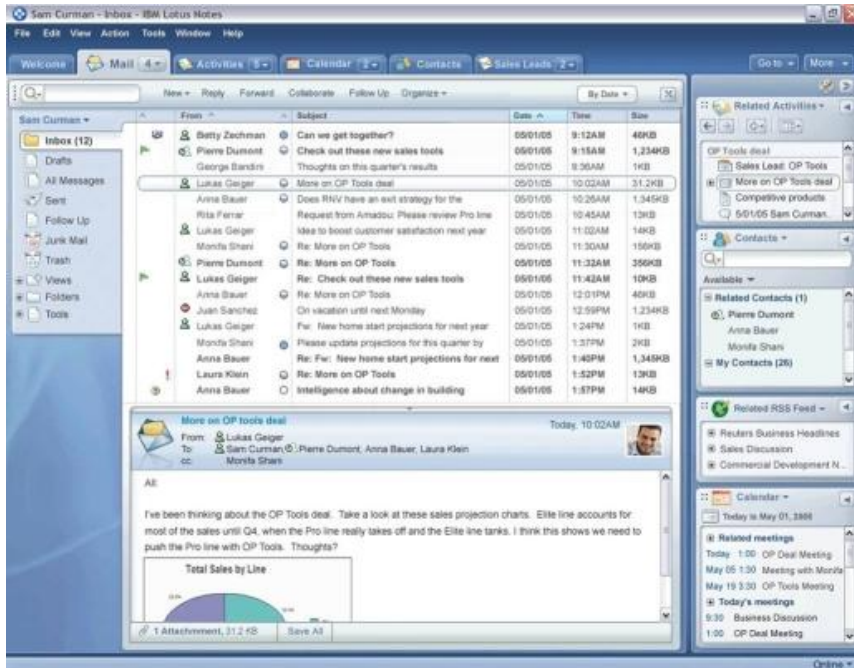


User interface

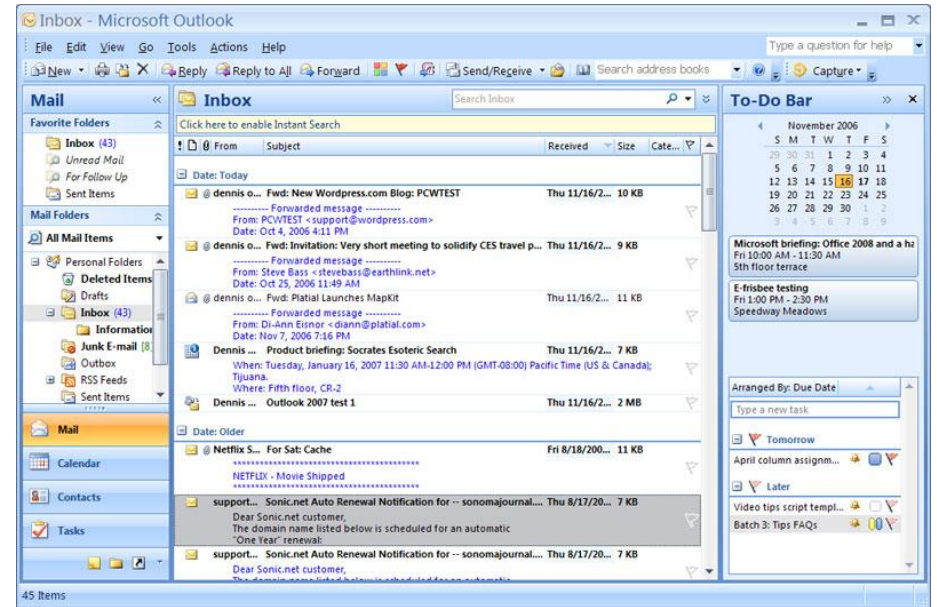


IBM Lotus Notes

- ready for business mashups and composite applications



MS Outlook





Pricing



IBM Lotus Notes/Domino

- world leading true collaboration platform
- Express offerings for SMB (< 1000 empl.)
- simple licensing per user, includes:
Lotus Notes (rich client), iNotes (web access), Lotus Traveler (mobile device sync), Lotus Sametime Entry (instant messaging), Lotus Symphony (document editors), 1Y support and maintenance
- Domino Express servers for free
(application server, mail server, web server, directory server)
- Independent on operating system (runs also on Linux)



MS Exchange

- messaging & calendaring system only
- MS Exchange 2007 Std
- MS Exchange CAL
- MS Outlook 2007
- depends on other products (Active Directory service of MS Windows server)
- by the time an enterprise has purchased Exchange and CALs for it, plus the Windows Server license and CALs plus MS Office tools, costs begin to snowball





Reviews

ITComparison.com

About us: IT Comparison team consist of many IT Professionals who work for several enterprise firms and was created to answer the need of independent comparisons of IT Products.

„Exchange 2007 get to be cheaper only if you calculate the initial licenses for non redundant setup. In all the other calculation and TCO Exchange 2007 will be in a loss situation.“

„Exchange 2007 require newer 64-bit hardware and more servers (at least 6 server in case of redundancy) where Lotus Domino can reach full redundancy with two servers only, this is due to the new roles Exchange 2007 came up with.“

„More servers means more licenses and clustering with Exchange require windows enterprise licenses which not required with Lotus Domino. All this give Domino an initial setup advantage when you look at the full setup cost.“

„In addition, if your setup require features like forums, portal, and instant messaging you will have to pay for an extra three separate products with Exchange where all of these are integrated into Domino server for free. All that Make Domino the TCO winner.“

Source: <http://www.itcomparison.com/Mail/Exchange2k7vslotus8/Exchange2k7vslotus8.htm>



Reviews

ChannelWeb

About us: The ChannelWeb is a world-wide community of product resellers, product vendors, distributors, and customers

„Both Exchange and Lotus have their pros and cons. We felt Lotus excelled when it came to installation, interoperability, customization and what you get for the price. Exchange, we believe, is superior in performance and feature set. The deciding factor was the edge in pricing value that Lotus has over Exchange.“



Source: <http://www.crn.com/mobile/217800062;jsessionid=N2200ZAHER03YQSNDLPSKH0CJUNN2JVN>



Links

Scorecard: Expert ranks Domino against Exchange

http://searchdomino.techtarget.com/news/article/0,289142,sid4_gci867853,00.html

"With Exchange, the most important consideration [for] any IT professional is that everything doesn't come with Exchange. You're not comparing apples to apples, and when you sit down and do the math, Microsoft doesn't have any compelling advantages, but that depends somewhat on what you're trying to do. If you're a small company using Windows PCs and all you need is e-mail, it doesn't make sense to [implement] Domino. If you're a high-tech law firm with 100 users and you want to have a groupware application and security is a concern, then Domino is a compelling solution. It's a case-by-case decision. There isn't one answer."

Is Notes/Domino 8.5 better than Exchange/Outlook 2007?

<http://www.dominopower.com/issues/issue200905/00002365001>

"All considered, for professional use, the Notes & Domino email platform wins against Exchange/Outlook, in pretty much all domains and again Notes & Domino does much more than just email."

Lotus Domino vs Exchange from M\$

<http://www.mydatabasesupport.com/forums/lotus-notes-admin/158814-lotus-domino-vs-exchange-m.html>

Domino vs. Exchange - getting the personal picture

<http://blogs.zdnet.com/Murphy/?p=1019>

Notes Migration Blog

<http://migratenotes.wordpress.com/>